

## CONTENTS

### EQUIPMENT

- 2 Buttress 7932-Kφ2
- 3 Sform panels

### SITES

- 4 Educational-laboratory building  
of Medical University in Kiev
- 5 Apartment house in Kiev
- 6 Micro district in Kiev
- 7 Apartment house in Odessa

### SUPPLEMENTAL INFORMATION

- 8 Invitation to the International  
building forums

## NEXT ISSUE

- New formwork design
- News
- New sites
- To your regard



# Buttress 7932-Kφ2

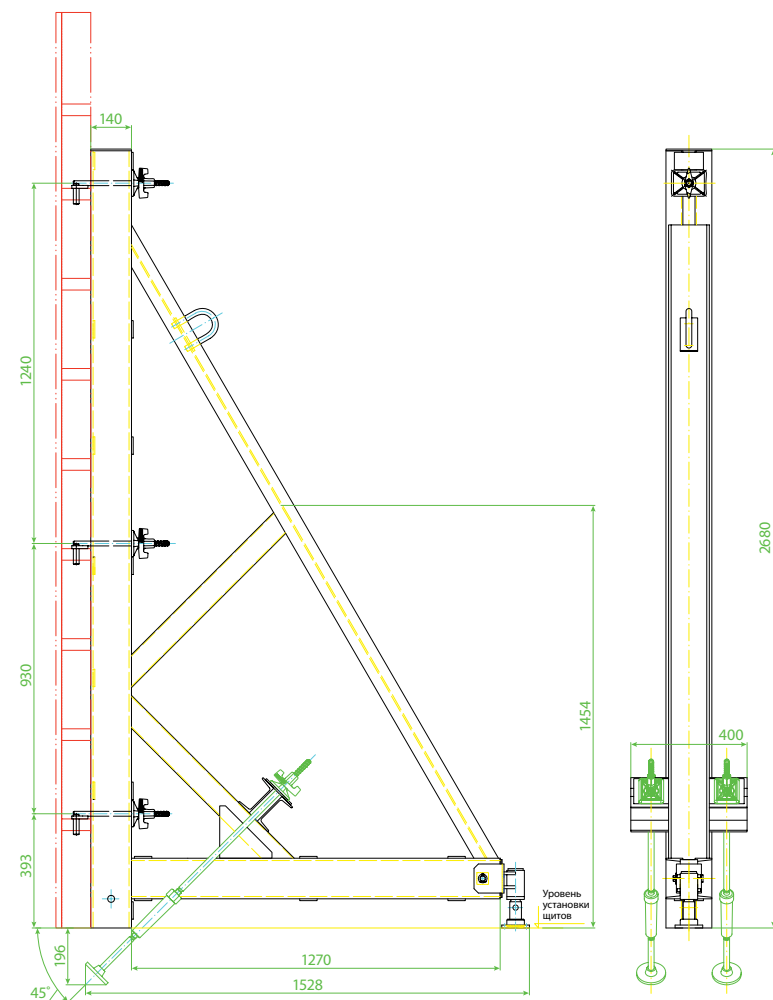
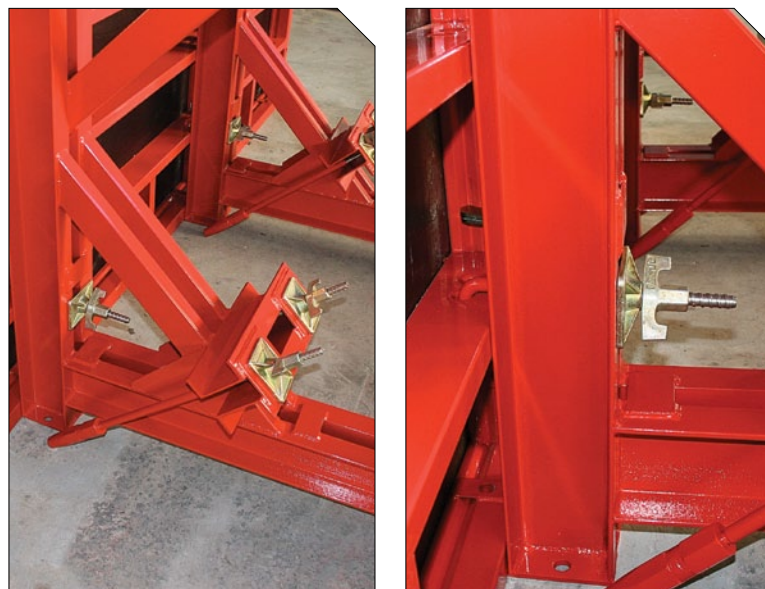
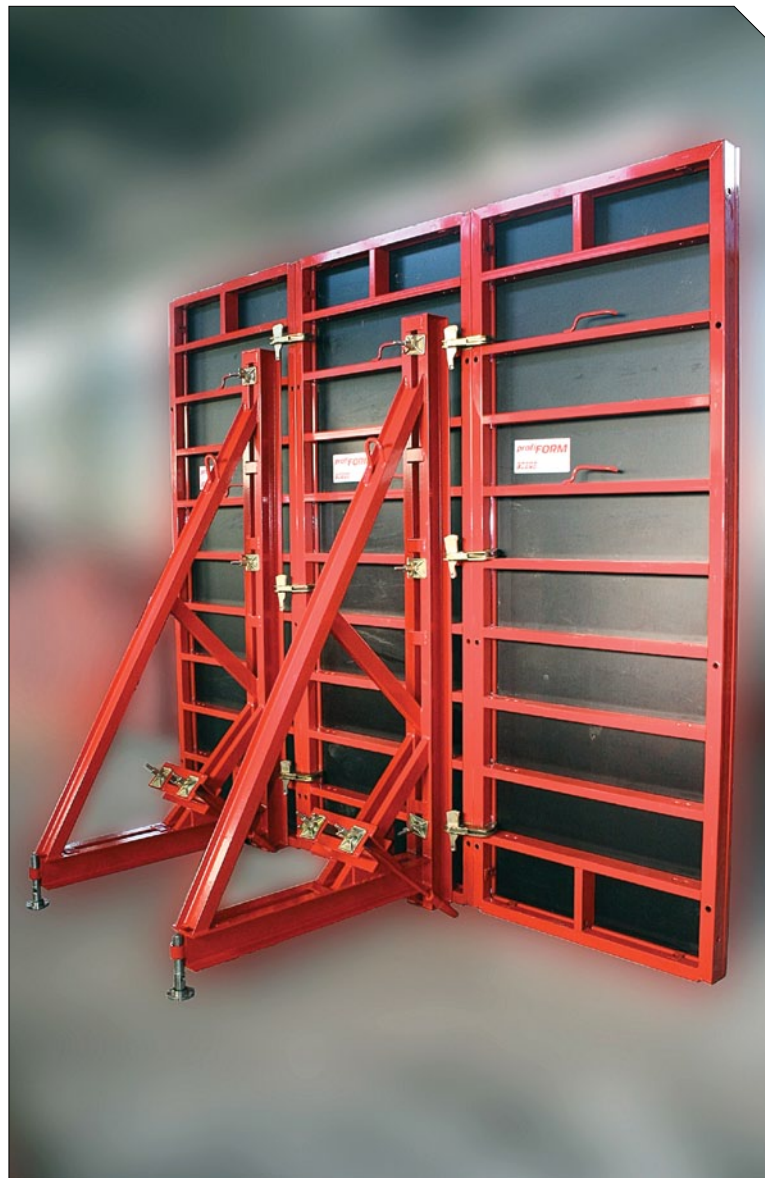
In cases when the location of the construction site is on a slope or the location does not allow disclosure of excavation to the limits of the natural slope of the soil perform fencing (building) the walls of the pit different types of piles and their subsequent concreting from the inside. Between the piles and the concrete surface waterproofing is installed often. In such cases, the builders are to install one-sided formwork and secure its attachment to the perception of concrete pressure. Using the anchor-rods and other measures for securing formwork to piles are often impossible because of waterproofing and other design requirements. In such cases, use a special design – buttresses.

Weight of the section is 181 kg.  
Step of placement is up to 1200 mm.

The company «Doka» proposes such buttress systems as «Variable» and «Universal», the company «Peri» proposes a reference frame.

Experience of using formwork HIPRO in Kiev, Kharkov and Brovary showed that we have gaps in the nomenclature of such elements. Our customers using our form panels, were forced to rent (buy) buttresses elsewhere, or get out of this situation in a very risky methods.

To meet this requirement of our customers this equipment is designed, manufactured and tested by company HIPRO.



# SFORM panels



The range of form panels «HIPRO» includes two series of panels – **ProfiForm** and **Light** series.

«**ProfiForm**» panels were designed for the construction of any structures with the pace of pouring concrete in the mold to a height of more than 3,6 m without restrictions (concrete pressure to 82,5 – 85 kN/m<sup>2</sup>). The largest panel of this series has the size 2350×3150mm. Assembly-disassembly of these panels can be conducted only with the use of lifting devices.

The most critical elements of the panels in this series are made **entirely** of stainless steel of Western European production. This provided, on the one hand, high stability and tolerance to stress; unchanging geometry of panels during the operation like the world's best form-

work, which was confirmed by operating experience, on the other hand, the price is 10 – 15% higher than similar panels made exclusively from domestic materials. Unfortunately, the profiles produced for formwork in Ukraine and Russia, make impossible to rich level of the formwork PERI Trio, DOKA Framax and HIPRO **ProfiForm**.

Panels of **Light** series are designed for construction with the rate of pouring concrete in the mold to a height of 2,4 m without restrictions (concrete pressure to 35 – 40 kN/m<sup>2</sup>). The operation of these boards requires manual assembly and dismantling. The largest panel of this series is 900h×1200mm. This series has been widely used for the formation of foundations and grillage.

In recent years, according to well-known reasons, the question was raised

up about developing new, budget series of panels that would provide concrete pouring a mold to a height of 2.8 m (floor height 3.0 m) without restrictions (concrete pressure up to 60 – 65 kN/m) and requires manual installation and dismantling.

The new series of **Sform** panels from HIPRO meets these criteria. Cost of this formwork is 25 – 35% less than **ProfiForm** series. The largest panel size is 900h×2850 mm, and does not exceed 100 kg, which is within the requirements of regulations on labour protection in lifting weights for the two workers.

The outer edges of the frame of the shield are made of rectangular tubes 40h×100 mm. Transverse edges of sheet steel in the form of channels. Forming surface – is a laminated plywood (s = 18 mm). Of course, to reduce

weight and cost of formwork, our designers had to make some simplifying design and maximum use of domestic materials.

Bench tests of **SForm** panels confirmed the ability of boards to withstand a pressure of 65 kN/m<sup>2</sup> with a triangular diagram with the highest loads regulatory deflection to 3 mm.

The base maximum height of panels is 2850 mm. The product range includes formwork panels module (line) – 300, 400, 600, 800 and 900 mm. And universal panels 600 and 800 mm.

We hope that the **SForm** panels would find their customers, especially in the construction of private housing, as well as on construction sites with limited use of lifting machinery and in construction, where first place will stand the cost of the equipment.

# Educational-laboratory building of Medical University in Kiev

Delivery of a series of vertical formwork ProfiFORM and elevator shafts



# Apartment house in Kiev



## Micro district in Kiev

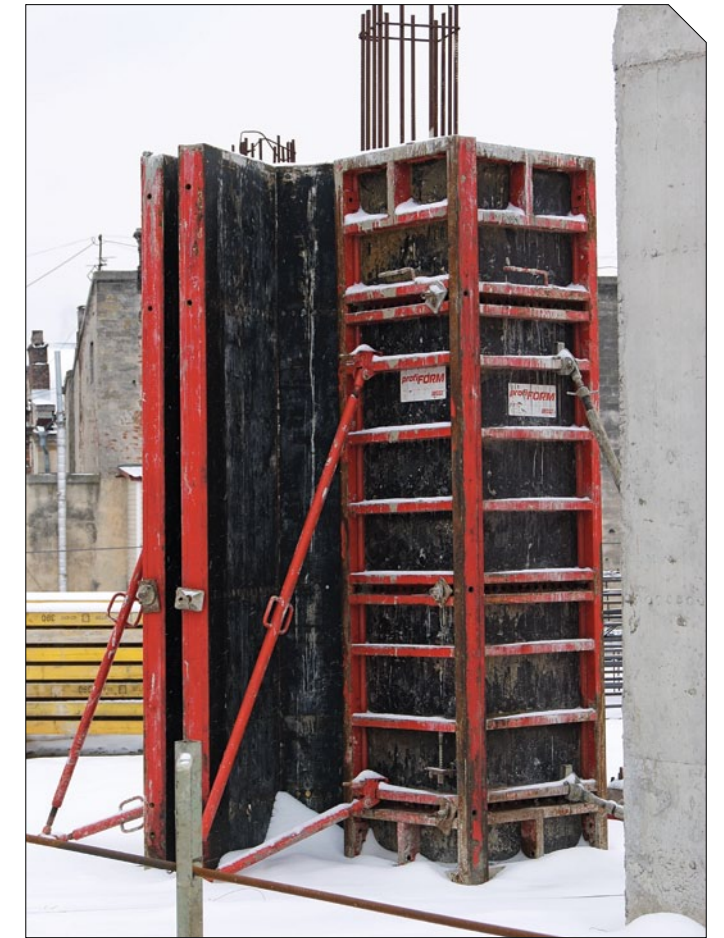
**The chief of construction:**  
Grib Vasily Nikolayevich



➤ We work with formwork GIPRO long ago. On our construction sites is used, even the first «Average» series with the metal forming the surface. Now actively using a series of ProfiFORM. Due to its technical features it is equipment we are very satisfied.



## Apartment house in Odessa



# Welcome!

Dear friends, partners and colleagues! We invite you to visit the HIPRO GROUP stand on the international exhibitions in 2011 – «VIRA UKRAINA» in Odessa, which will be held from **10 to 13 of March 2011** at the Exhibition Centre on Morskoj vokzal and «Interbudexpo-2011», which will be held at Kiev from **22 to 26 March 2011** at the Exhibition Complex KyivExpoPlaza. Both international construction forums are to help create in Ukraine a modern building complex, to implement the energy-efficient, safe-ecological materials and technologies in the construction, optimize the architectural and design solutions. HIPRO GROUP, in its turn, is going to present new developments in the field of formwork for construction.



# HIPRO™

## TODAY

Quarterly review  
№9 August 2010

**Founder and Publisher**  
HIPRO Group

**Address:**  
Hoholivska str. 22-24, Kyiv, 01601,  
Ukraine  
Tel: +38 (044) 486-2426  
e-mail: hipro@g.com.ua

**Project manager**  
Vasyl Stasiuk

**Chief Executive**  
Anna Viktoruk

**Edition** 1000 items

Using materials HIPRO today,  
references are obligatory.

### HIPRO GROUP HEADQUARTER

Hoholivska str. 22-24, Kyiv, 01601,  
Ukraine  
Tel: +38 (044) 486-2426, 486-6969,  
482-0133  
e-mail: hipro@g.com.ua

### Representative office in the Dnipropetrovsk, Donetsk, Zaporizhia and Crimea Vitaly Livadnyl:

69000, Zaporizhia, Zavodska. Str., 3  
Tel./ Fax: +38 (061) 701-7235  
Mobile phone: (050) 335-1556

### Odessa's representative office: Vitaly Boyko

65026, Odessa, Primorska str., 27  
Tel./ Fax: +38 (048) 723-7595  
Mobile phone: (050) 333-6168

### Harkiv's representative office: Serhiy Eremenko

61003, Kharkiv, Lenina av.40, of.518  
Tel./ Fax: +38 (057) 720-4315  
Mobile phone: (066) 244-7460

### Partners in Russian Federation:

**Tekhnosfera LTD**  
Moscow region, Lubertsy, Oktiabrskiy av, 15  
Tel.: (495) 647-0997  
www.tehnosf.ru

### Partners in Belarus:

**Belfantex LTD**  
Minsk, of. 26A, Tsentralna str., 1A,  
Tel.: + 375 17 297-4500  
www.bfts.by